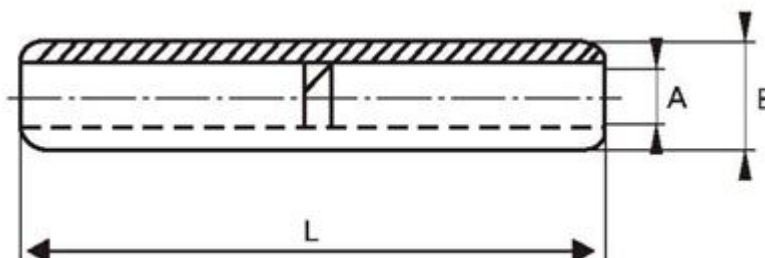


Aluminium Splices

Aluminium-Copper bimetallic splices.neutral grease filled.extremities closed by a protection cap.



Same wire ranges

Part No.	Wire range (mm ²)	Dimensions(mm)		
		A	E	L
GL 16	16	5.5	16	91
GL 25	25	6.5	16	91
GL 35	35	8	16	91
GL 50	50	9	20	107
GL 70	70	11	20	107
GL 95	95	12.5	20	107
GL 120	120	13.7	25	133.5
GL 150	150	15.5	25	133.5
GL 185	185	17	32	144
GL 240	240	19.5	32	144
GL 300	300	23.3	40	218.5
GL 400	400	26	40	218.5
GL 500	500	29.1	47	219
GL 630	630	32.5	47	219